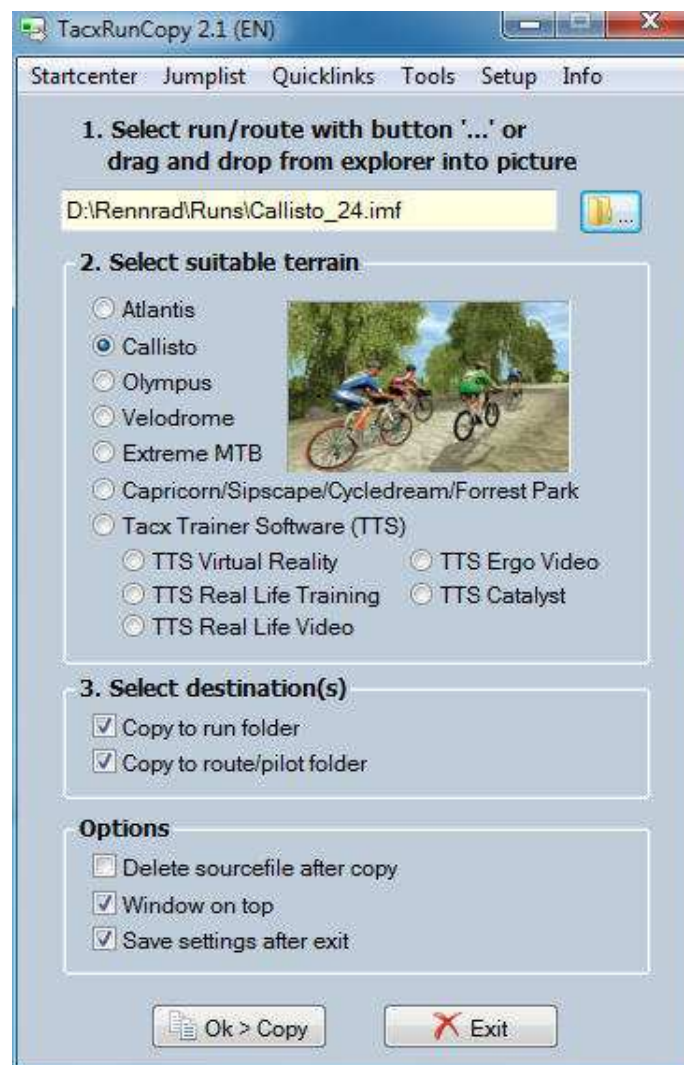


The GUI of TacxRunCopy 2.1 (for functions see description below)



Possible ways howto input a run (*.im,*.imf,*.tts,*.rut) to TRC

- 📁 Selection over button "... " and opening the file
- 📁 From Startcenter / Explorerwindow or an opened explorer or filemanager drag and drop the file into the picture.
- 📁 From Startcenter / Explorerwindow or an opened explorer or filemanager drag and drop the file on a link from TacxRunCopy on the desktop.








The suitable terrain will be recognized, the radiobutton set and the possible destinations suggested in 1 or both checkboxes (run / route)

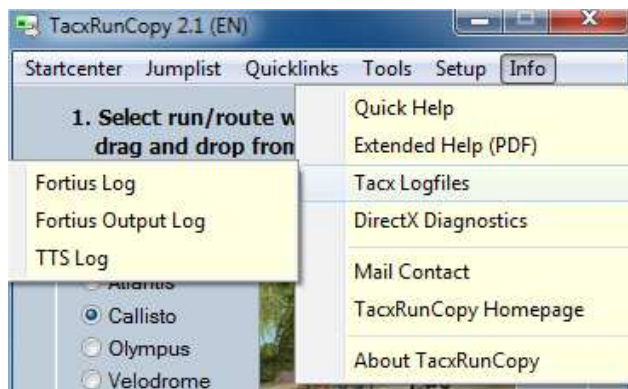
1 Checkbox, means 1 destination must be marked

Definition of run, pilotrun, pilotroute und route :

Pilotrun, pilotroute und route are the same and have always to copy into the pilotfolder to make the route accessible in the mainmenu. If opponents should be selectable too, they have to be copied into the runfolder. In these helptext I use always the name "run".

Menuitem "Startcenter"

-  **Explorer Window** (Hotkey F5) opens an explorerwindow in the current sourcedirectory
-  **Imagic Software** : If installed, starts the (green) Imagic software
-  **Fortius Software** : If installed, starts the (blue) Fortius software
-  **Tacx Trainer Software** : If installed, starts the TTS software (TTS2 will be automatically recognized, TTS1 must configured over menuitem "Setup/Konfiguration")
-  **Tacx Analyser** : Starts the (Fortius) Tacx Analyser
-  **Tiny Analyser** : If installed, starts the TinyAnalyser
-  **MyProg1/2** : 2 free and own defined programmes over menuitem "Setup/Konfiguration"

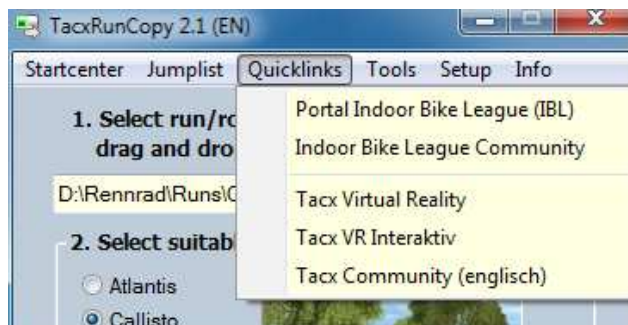


Menuitem "Jumplist"



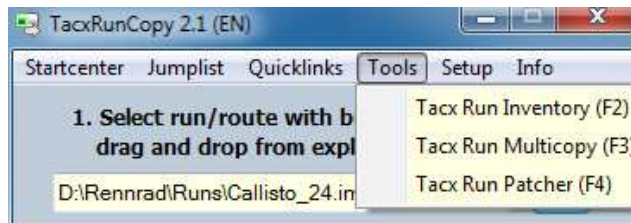
If installed, the root directories of the Tacx applications will be opened in an explorer window. Also accessible with hotkeys F6 / F7 / F8

Menuitem "Quicklinks"



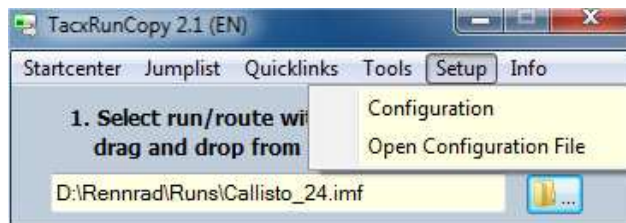
Important and related weblinks will be opened in the standard webbrowser, changes of URLs is possible over menuitem "Setup/Configuration"

Menuitem "Tools"



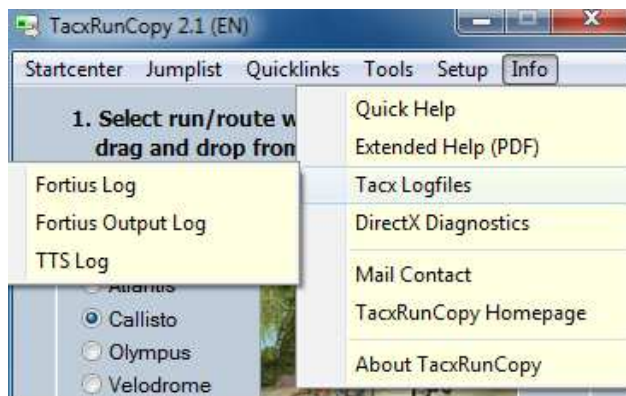
- ✚ **Tacx Run Inventory** (Hotkey F2) : List, sort, delete, copy or move of all from the system gathered runs. Different timefilters are possible : 24 hours / 1 week / 4 weeks and free defined time periode.
- ✚ **Tacx Run Multicopy** : (Hotkey F3) Copy or move of more runs to destination directory in a single step.
- ✚ **Tacx Run Patcher** (Hotkey F4) : Rename a run, optional rename the filename too.
(Run name = File name).
Supports imagic und fortius (*.im,*.imf,*.rut), at that moment no tts yet.

Menuitem "Setup"



- ✚ **Configuration** : 2 free defined programs, which will be integrated to the startcenter, configuration of the weblinks (URLs), which are listed under "Quicklinks". Configuration from TinyAnalyser and TTS 1, also included in the startcenter.
- ✚ **Open Configuration File** : Manually editing of the Configuration file (pay attention !)

Menuitem "Info"



- ✚ **Quick Help**
- ✚ **Extended Help** (these help) in PDF format
- ✚ **Tacx Logfiles** : Listing the 2 logfiles of fortius- and TTS 1 or 2 software in notepad application.
In case of selecting the log of TTS2, the newest one will be listed. To look for all TTS2 logs just click F8 (TTS Root directory) go back 1 directory and change to "Logs"
- ✚ **DirectX Diagnostics** : Start of "dxdiag.exe" to show and analyse installed DirectX drivers and devices
- ✚ **TacxRunCopy Homepage** : Present Webpage of TacxRunCopy
- ✚ **Mail Contact** : Support, questions, opinions, improvements, bug reports via email
- ✚ **About TacxRunCopy** : Versioninfo of TacxRunCopy, registrationinfo, user- and systeminfo
state of the user access control (UAC), state of admin account (yes/no)

Modul Tacx Run Inventory

Tacx Run Inventory

Listing of all on system recorded tacx files on a given period ...

☒ Select/deselect all hits
 ☒ List runs
 ☒ List routes

Runs in selected period	Terrain	Folder	Timestamp
<input checked="" type="checkbox"/> AT_HS09_06.imf	Atlantis	D:\Rennrad\Fortius\Imagic\data\pilotrout\atlantis	2009/11/21 11:05:57
<input checked="" type="checkbox"/> AT_44.imf	Atlantis	D:\Rennrad\Fortius\Imagic\data\pilotrout\atlantis	2009/11/16 18:12:16
<input checked="" type="checkbox"/> Callisto24_Neu.imf	Callisto	D:\Rennrad\Fortius\Imagic\data\pilotrout\callisto	2009/10/20 19:32:46
<input checked="" type="checkbox"/> Callisto16.imf	Callisto	D:\Rennrad\Fortius\Imagic\data\pilotrout\callisto	2009/12/02 20:11:34
<input checked="" type="checkbox"/> Callisto_27.imf	Callisto	D:\Rennrad\Fortius\Imagic\data\pilotrout\callisto	2009/12/13 14:34:55
<input checked="" type="checkbox"/> Callisto_16.imf	Callisto	D:\Rennrad\Fortius\Imagic\data\pilotrout\callisto	2009/12/01 20:53:13
<input checked="" type="checkbox"/> ForestPark-'Offroad 31k Loop'-Boudewi...	Imagic	D:\Rennrad\Imagic\i-Magic\routes	2009/11/25 17:35:04
<input checked="" type="checkbox"/> Capricorn-'iMagic_Ref'.rut	Imagic	D:\Rennrad\Imagic\i-Magic\routes	2009/11/04 20:58:30
<input checked="" type="checkbox"/> OL_WS09_02.imf	Olympus	D:\Rennrad\Fortius\Imagic\data\pilotrout\olympus	2009/11/22 17:53:29
<input checked="" type="checkbox"/> deckersberg_1.tts	TTS RLT	C:\ProgramData\tacx\tts2\rlt	2009/11/21 12:36:38
<input checked="" type="checkbox"/> deckers1.tts	TTS RLT	C:\ProgramData\tacx\tts2\rlt	2009/11/16 20:21:56
<input checked="" type="checkbox"/> FR_AlpineClassic.tts	TTS RLV	C:\ProgramData\tacx\tts2\rlv	2009/12/06 14:28:02
<input checked="" type="checkbox"/> ES_MajorcaTour.tts	TTS RLV	C:\ProgramData\tacx\tts2\rlv	2009/12/13 15:43:18
<input checked="" type="checkbox"/> DE_Roth-Tri.tts	TTS RLV	C:\ProgramData\tacx\tts2\rlv	2009/12/06 14:27:46
<input checked="" type="checkbox"/> CadelDemo2008.tts	TTS VR	C:\ProgramData\tacx\tts2\vr\runs	2009/11/16 20:18:32

Timefilter

☐ Runs since last 24 hours
 ☒ from 19.10.2009 until 19.12.2009
 ☐ Runs since last week
 ☐ Runs since 4 weeks

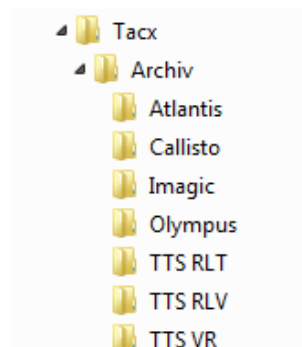
17 hits in these period

Fileactions

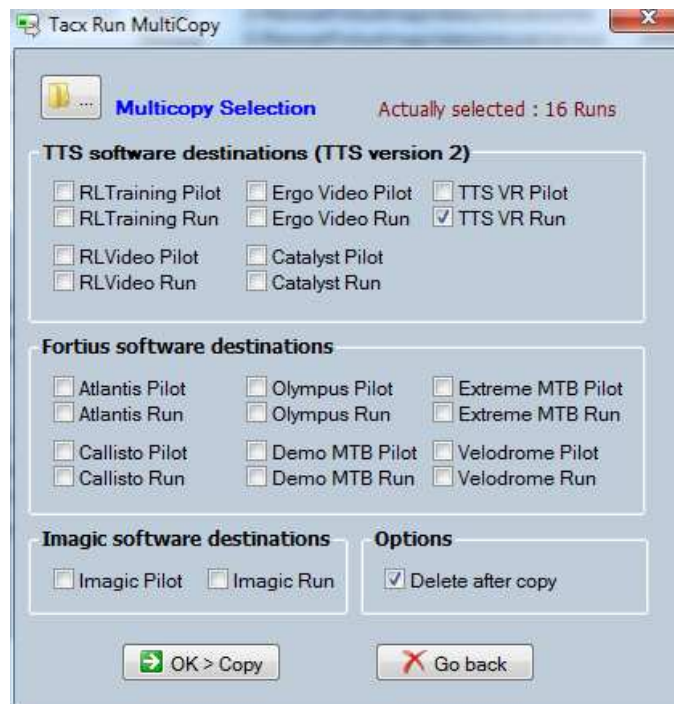
☒ Copy marked runs to D:\Tacx\Archiv
 ☒ Move (delete after copy)
 ☒ Generate 'terrainstructur' at destination
 ☐ Delete marked runs

- Listing of all runs on a given period
- Hits can be marked for different file actions : delete or copy / move to a defined directory
- In case of activating the checkbox "Generate terrainstructur at destination", under the destination directory a structure will be made, which has the name of the terrain of the copied or moved run.

In example there was sorted by "Terrain" with listing of all runs and routes in a time from 19.10.2009 until 19.12.09. 17 hits were found and marked for filemoving to D:\Tacx\Archiv with generating terrainstructur, depending on the terrains of the moved runs :



Modul Tacx Run MultiCopy



- ✚ (Multi)Selection of a couple of runs and routes of a terrain with button "..."
- ✚ Selection of destination directory with mark of certain checkboxes
- ✚ Also the files can be moved (delete after copy)

Modul Tacx Run Patcher



- ✚ Selection of the run (*.im/*.imf/*.rut), which name should be changed over button "..."
- ✚ Terrain and the name of the run will be recognized automatically
- ✚ The new name may have a maximum of 16 chars
- ✚ Checkbox 1 : Rename filename as the same as the new name of the run
- ✚ Checkbox 2 : Make backup before patch